

YOUR SPACE



Art and Culture as a pathway to enhanced social inclusion for young people facing socio-structural disadvantages or precarious living conditions



LISTEN TO YOUR NEIGHBORHOOD.

Social space and lifeworld-oriented strategies are the basis for building a relationship of trust with young people and their peer-groups. Practical examples, exercises and step-by-step instructions enable you to reflect on how to deal with the specific needs and interests of your local context, and guide you to better relate to the situation in which the young people are currently living.

INTERSECTIONALITY IN THE CONTEXT OF YOUTH WORK

The concept of intersectionality can be successfully applied to capture the many forms of discrimination experienced within youth communities as well as in the lives of individuals emerging from diverse backgrounds or life-paths. It is a comprehensive approach that links areas of diversity and inclusion, as well as revealing the varied understanding and social positioning of both young people and practitioners.





Co-financed by the European Union

REALIZATION IN
Germany, Poland, Spain

DURATION
2022-2025

PROJECT COORDINATION
BGZ Berliner Gesellschaft für internationale Zusammenarbeit mbH
www.bgz-berlin.de

PARTNER IN BERLIN
Outreach gGmbH



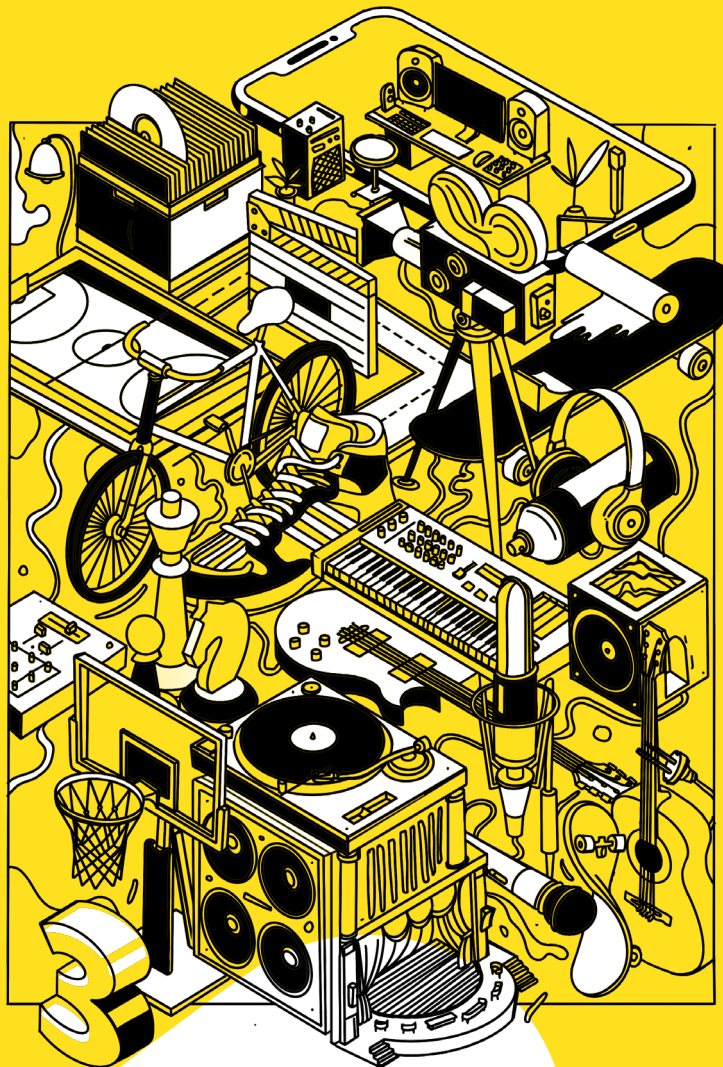
PARTNER IN POLAND
Młodzieżowy Ośrodek Wychowawczy Nr 2 (MOW),
Fundacja Centrum Edukacji Obywatelskiej (CEO)



PARTNER IN SPAIN
Fundación MUSOL,
Integra 2 Mundo



This project has been funded with support from the European Commission. This publication reflects the views only of the author, and the Commission cannot be held responsible for any use which may be made of the information contained therein.



FACILITATING CULTURAL YOUTH EDUCATION.

How do mutually beneficial cooperations at the intersection of art education and youth work succeed in practice in Berlin, Valencia and Warsaw? How can social practitioners and youth actors benefit from arts and cultural practices to foster youth participation? How can we accelerate youth empowerment and design open, participatory, diversity-conscious, and anti-discriminatory youth education formats? How can we facilitate a stronger connection between creative professionals and the everyday reality of young people, in order to accelerate the creative potential amongst the youth?

CAPACITY BUILDING

This training addresses all stakeholders, youth and social work professionals, cultural organizations and education institutions, as well as other parties active in the social space with an interest in fostering socio-cultural practices to empower young people through participation. This practical guide fosters collaboration between (cultural) educators, youth workers, creative actors and artists interested in engaging with practical participatory youth work based on the social space oriented approaches. If you are keen to increase your knowledge and skills, contribute to the transformation of the sector and push for a shift in attitudes with your institution or organization, come and learn more on this topic in the YourSpace Training Modules.

